



MEC SEMINAR
TRINITY TERM 2019

*Situating the Study of Islam in
Global Intellectual History:
Toshihiko Izutsu's Middle-Earth*

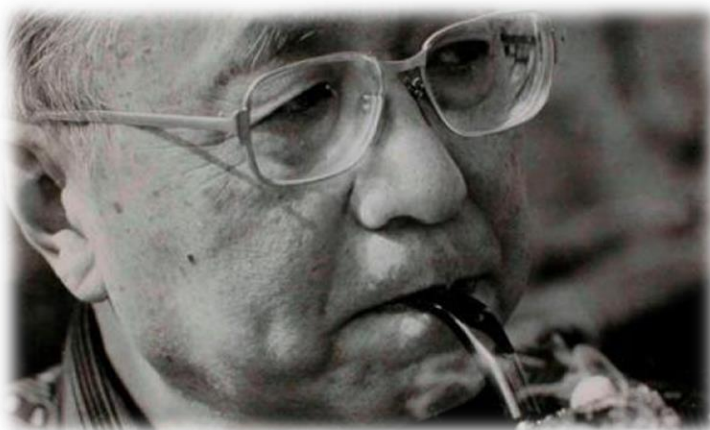


Image credit: Pintrest

Friday, 24 May at 5pm

Investcorp Auditorium, St Antony's College

Armando Salvatore (McGill University)

The lecture investigates the contribution to the study of Islam by a non-Muslim, yet non-Western and non-Eurocentric personality, the Japanese linguist and philosopher Toshiko Izutsu (1914-1993). It traces Izutsu's original trajectory from his early practice of Zen Buddhism, through his discovery of the religious fervour of Greek philosophers, to his exploration of the spiritual and intellectual powerhouse represented by Islam as enacting a historical culmination of prophetic speech. It shows how this powerhouse represented for Izutsu a veritable Middle-Earth bridging Western (Abrahamic) and Eastern cultural and religious traditions and making obsolete the rigid geo-cultural divide on which their mutual radical divergence was premised.

The event is part of the following conference:

Neither Near Nor Far: Encounters and Exchanges between Japan and the Middle East

Supported by:

The John Fell Fund, University of Oxford

Japan Society for the Promotion of Science KAKENHI Grant Number 16KT0098

The Middle East Centre, St Antony's College, University of Oxford

The Center for Modern Middle East Studies, National Museum of Ethnology



ALL WELCOME

Email: mec@sant.ox.ac.uk

Telephone: +44 (0)1865 284780

